

# Sucker Train Blues

Velvet Revolver  
**Contraband**  
Guitarra / Electric Guitar

Standard tuning

$\text{♩} = 167$

Intro



Musical notation for the Intro section, measures 1-15. The notation is in 4/4 time and standard tuning. It features a series of chords and melodic lines. Measure 1 is a whole rest. Measure 2 starts with a quarter rest followed by a quarter note G#4. Measure 3 has a quarter note G#4, a quarter note A4, and a quarter note B4. Measure 4 has a quarter note G#4, a quarter note A4, and a quarter note B4. Measure 5 has a quarter note G#4, a quarter note A4, and a quarter note B4. Measure 6 has a quarter note G#4, a quarter note A4, and a quarter note B4. Measure 7 has a quarter note G#4, a quarter note A4, and a quarter note B4. Measure 8 has a quarter note G#4, a quarter note A4, and a quarter note B4. Measure 9 has a quarter note G#4, a quarter note A4, and a quarter note B4. Measure 10 has a quarter note G#4, a quarter note A4, and a quarter note B4. Measure 11 has a quarter note G#4, a quarter note A4, and a quarter note B4. Measure 12 has a quarter note G#4, a quarter note A4, and a quarter note B4. Measure 13 has a quarter note G#4, a quarter note A4, and a quarter note B4. Measure 14 has a quarter note G#4, a quarter note A4, and a quarter note B4. Measure 15 has a quarter note G#4, a quarter note A4, and a quarter note B4. A dynamic marking *f* is present in measure 5.

$\text{♩} = 167$

$\text{♩} = 173$

Pre-Verse



Musical notation for the Pre-Verse section, measures 16-24. The notation is in 4/4 time and standard tuning. It features a series of chords and melodic lines. Measure 16 has a quarter note G#4, a quarter note A4, and a quarter note B4. Measure 17 has a quarter note G#4, a quarter note A4, and a quarter note B4. Measure 18 has a quarter note G#4, a quarter note A4, and a quarter note B4. Measure 19 has a quarter note G#4, a quarter note A4, and a quarter note B4. Measure 20 has a quarter note G#4, a quarter note A4, and a quarter note B4. Measure 21 has a quarter note G#4, a quarter note A4, and a quarter note B4. Measure 22 has a quarter note G#4, a quarter note A4, and a quarter note B4. Measure 23 has a quarter note G#4, a quarter note A4, and a quarter note B4. Measure 24 has a quarter note G#4, a quarter note A4, and a quarter note B4.

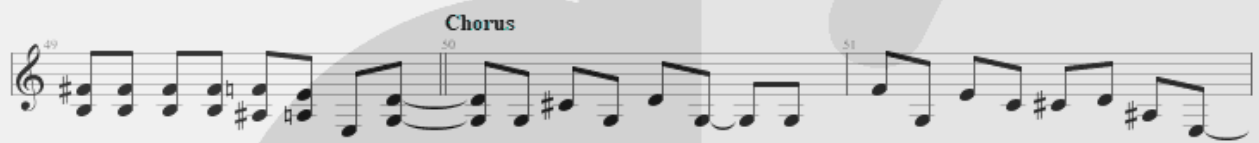
Verse



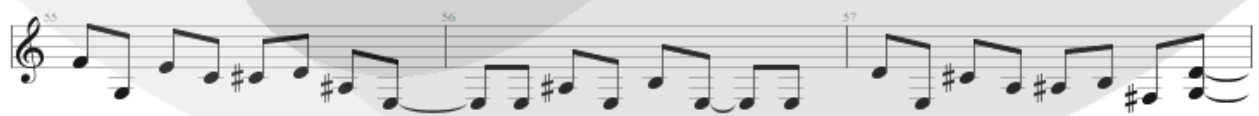
Musical notation for the Verse section, measures 25-27. The notation is in 4/4 time and standard tuning. It features a series of chords and melodic lines. Measure 25 has a quarter note G#4, a quarter note A4, and a quarter note B4. Measure 26 has a quarter note G#4, a quarter note A4, and a quarter note B4. Measure 27 has a quarter note G#4, a quarter note A4, and a quarter note B4.



**Pre-Chorus**



**Chorus**



58 59 60

61 62 63

64 65 66

Verse

67 68 69

70 71 72

73 74 75

76 77 78

79 80 81

82

Pre-Chorus

85 86 87

**Chorus**



Musical notation for the Chorus section, measures 88-105. The notation is written on a single treble clef staff. It consists of 18 measures of music. Measures 88-90 are marked with measure numbers 88, 89, and 90. Measures 91-93 are marked with measure numbers 91, 92, and 93. Measures 94-96 are marked with measure numbers 94, 95, and 96. Measures 97-99 are marked with measure numbers 97, 98, and 99. Measures 100-102 are marked with measure numbers 100, 101, and 102. Measures 103-105 are marked with measure numbers 103, 104, and 105. The music features a mix of eighth and sixteenth notes, with some measures containing beamed eighth notes and others containing sixteenth notes. There are several sharp accidentals throughout the piece.

**Bridge**



Musical notation for the Bridge section, measures 106-121. The notation is written on a single treble clef staff. It consists of 16 measures of music. Measures 106-109 are marked with measure numbers 106, 107, 108, and 109. Measures 110-113 are marked with measure numbers 110, 111, 112, and 113. Measures 114-117 are marked with measure numbers 114, 115, 116, and 117. Measures 118-121 are marked with measure numbers 118, 119, 120, and 121. The music features a mix of eighth and sixteenth notes, with some measures containing beamed eighth notes and others containing sixteenth notes. There are several sharp accidentals throughout the piece.

**Guitar Solo**



Musical notation for the Guitar Solo section, measures 122 to 136. The notation is written on a single treble clef staff. It consists of a series of eighth and sixteenth notes, often beamed together, with some chords. Measure numbers 122, 123, 124, 125, 126, 127, 128, 129, 130, 131, 132, 133, 134, 135, and 136 are indicated above the staff.

**Breakdown**




Musical notation for the Breakdown section, measures 137 to 142. The notation is written on a single treble clef staff. It shows a sequence of chords, with some measures containing rests. Measure numbers 137, 138, 139, 140, 141, and 142 are indicated above the staff.

**Out-Chorus**



Musical notation for the Out-Chorus section, measures 143 to 152. The notation is written on a single treble clef staff. It begins with rests in measures 143, 144, and 145, followed by a melodic line of eighth and sixteenth notes. Measure numbers 143, 144, 145, 146, 147, 148, 149, 150, 151, and 152 are indicated above the staff.



153 154 155

156 157 158

159 160 161

162 163 164

165 166 167

168 169 170

171 172 173 174  $\text{♩} = 167$

175 176 177 178

179 180 181 182

183 184 185 186

187 188 189

190