

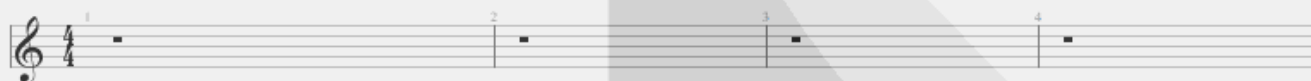
Refuse Resist

Sepultura
Chaos A.D.

Guitarra / Electric Guitar

Tune down 1 step
① = D ④ = C
② = A ⑤ = G
③ = F ⑥ = D

$\text{♩} = 135$



$\text{♩} = 120$





Musical score for guitar, measures 19-38. The score is written in treble clef with a key signature of one sharp (F#). It consists of ten staves of music. Measures 19-20 show a sequence of chords and single notes. Measures 21-22 continue with similar patterns. Measures 23-24 show a sequence of chords and single notes. Measures 25-26 show a sequence of chords and single notes. Measures 27-28 show a sequence of chords and single notes. Measures 29-30 show a sequence of chords and single notes. Measures 31-32 show a sequence of chords and single notes. Measures 33-34 show a sequence of chords and single notes. Measures 35-36 show a sequence of chords and single notes. Measures 37-38 show a sequence of chords and single notes.



Musical score for guitar, consisting of ten staves of notation. The score is written in treble clef with a key signature of one sharp (F#). The tempo is marked as $\text{♩} = 160$. The score includes various musical notations such as eighth notes, sixteenth notes, and chords. A "Solo" section begins at measure 56. The score is numbered with measure numbers 39, 40, 41, 42, 43, 44, 45, 46, 47, 48, 49, 50, 51, 52, 53, 54, 55, 56, 57, and 58.



The image displays a musical score for guitar, consisting of 12 staves of music. The score is written in treble clef and features a key signature of one sharp (F#). The music is organized into measures, with measure numbers 59 through 82 indicated at the beginning of each staff. The notation includes various rhythmic values such as eighth and sixteenth notes, as well as rests. A large, semi-transparent watermark is overlaid on the page, featuring a stylized guitar silhouette and the text 'PARTITURA DE MUSICA.com.br'. The watermark is centered vertically and horizontally across the page.



The image displays a musical score for guitar, consisting of ten staves of music. The notation is written in treble clef with a key signature of one sharp (F#). The score is divided into two systems of five staves each. The first system covers measures 83 to 91, and the second system covers measures 92 to 103. The music features a mix of eighth and sixteenth notes, often beamed together in groups. There are several instances of slurs and ties. The piece concludes with a double bar line at the end of measure 103. A large, faint watermark of a guitar is visible in the background of the page.