

# Nightmare Long

Metallica

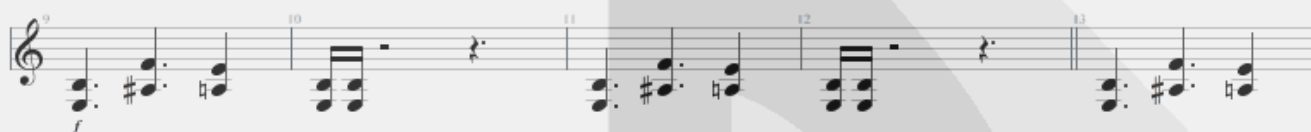
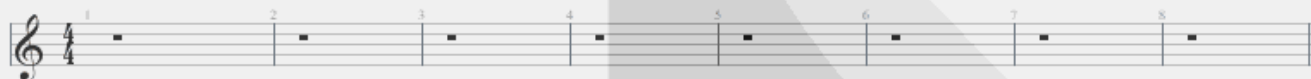
Death Magnetic

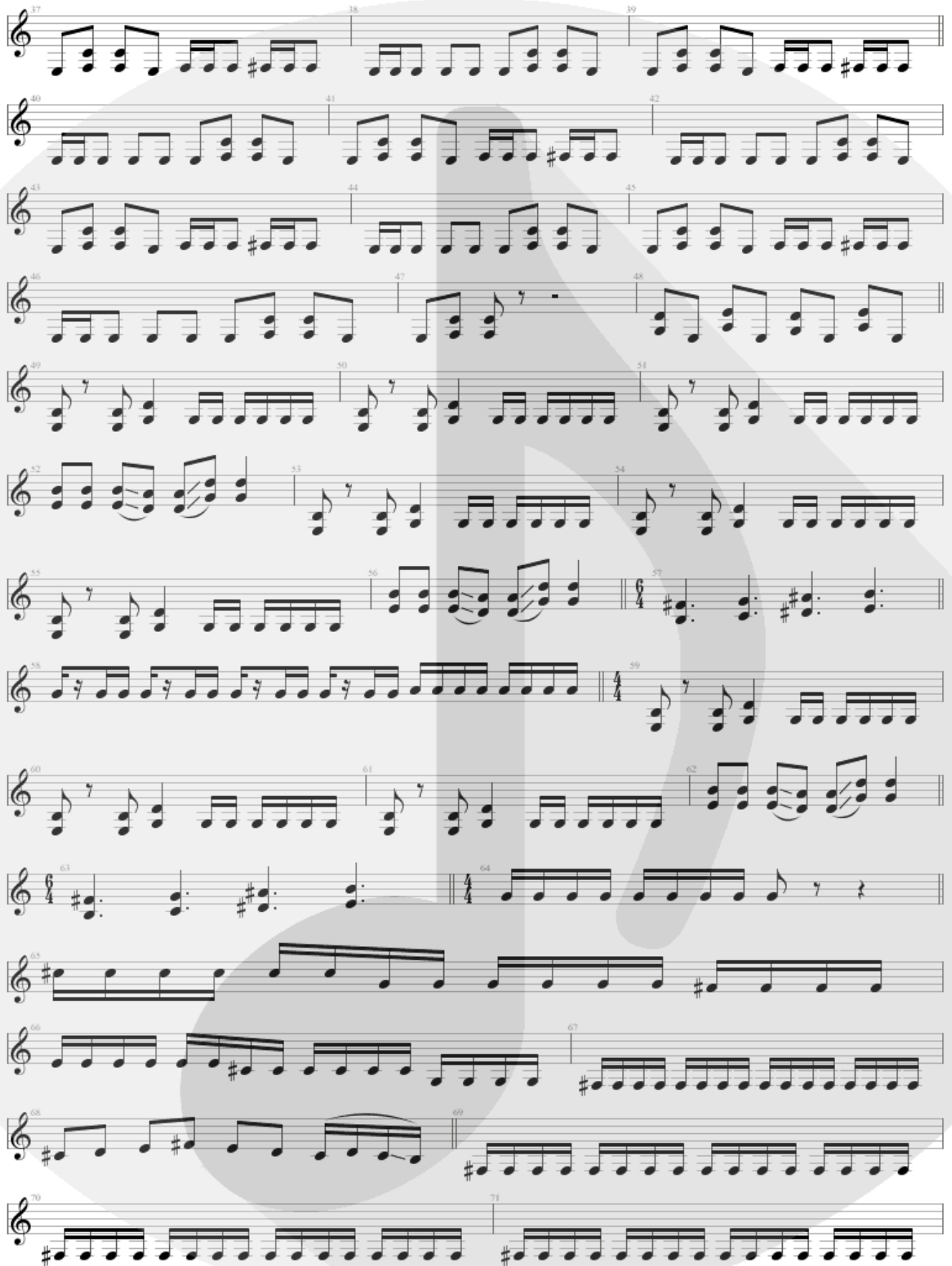
Guitarra / Electric Guitar 2

Tune down 1 step

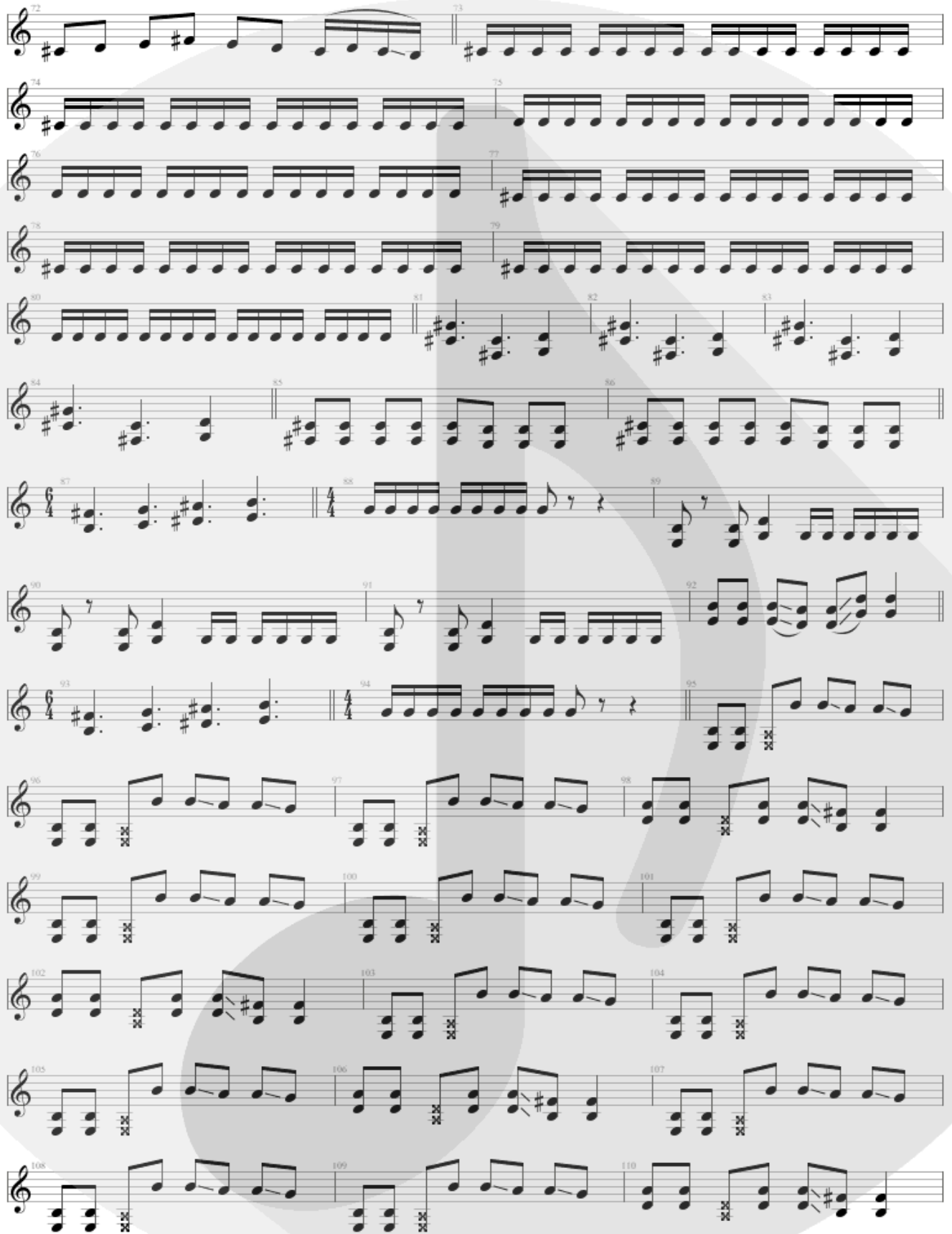
- ① = D    ④ = C
- ② = A    ⑤ = G
- ③ = F    ⑥ = D

$\text{♩} = 120$

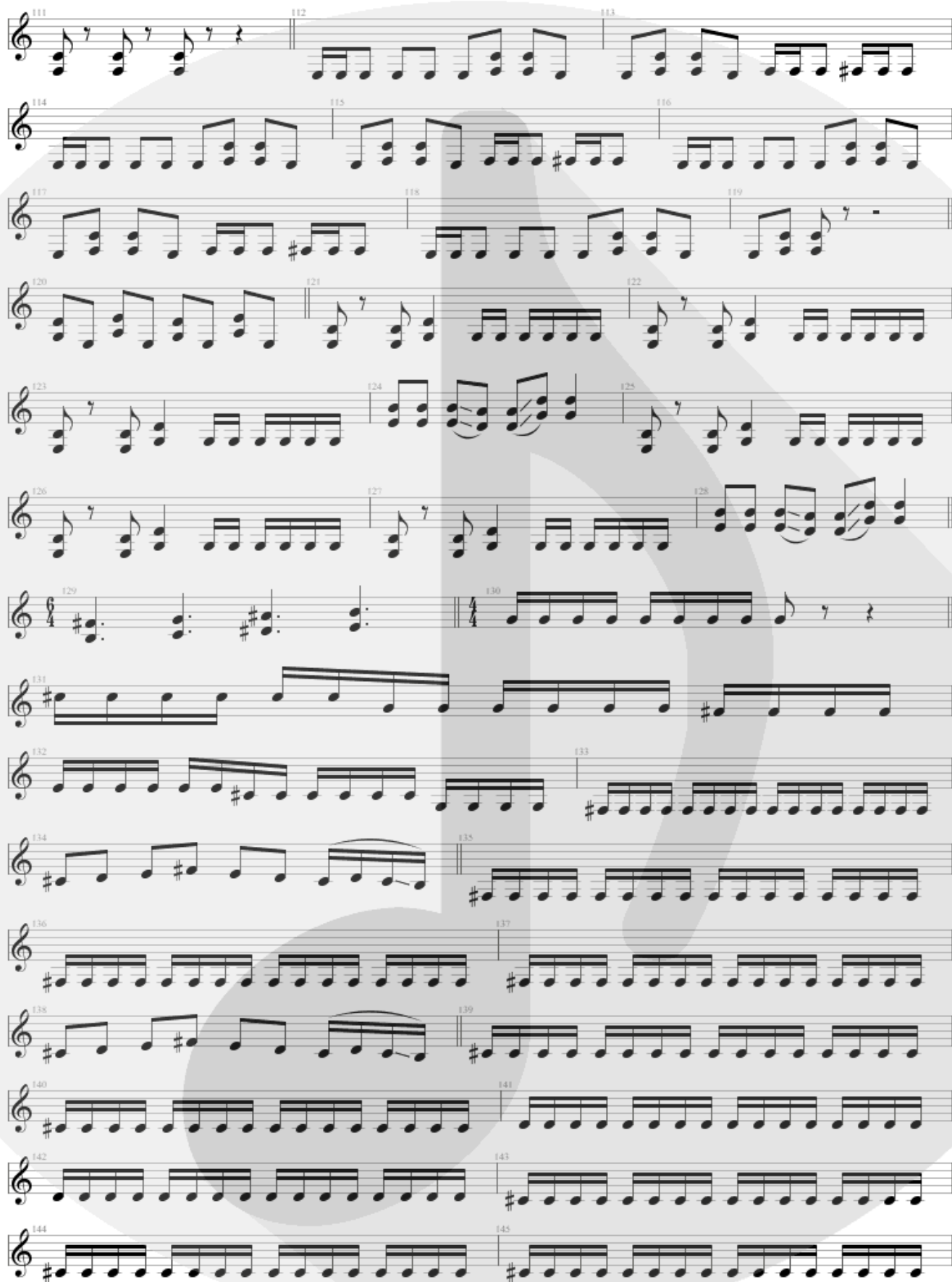




The image displays a musical score for guitar, consisting of 14 staves of music. The score begins at measure 37 and ends at measure 71. The music is written in treble clef with a key signature of one sharp (F#). The notation includes various rhythmic values such as eighth and sixteenth notes, as well as rests and accidentals. A large, semi-transparent watermark of a guitar is visible in the background of the page.



The image displays a musical score for guitar, consisting of 18 staves of music. The score is written in treble clef with a key signature of one sharp (F#). The music begins at measure 72 and ends at measure 110. The notation includes various rhythmic values such as eighth and sixteenth notes, as well as rests. A double bar line is present at measure 73. The score features several measures with 'x' marks below the notes, indicating muted strings. The background of the page is a light gray with a large, faint watermark of a guitar.



Musical score for guitar, measures 111-145. The score is written in treble clef with a key signature of one sharp (F#). The music consists of a single melodic line. Measures 111-113 show a sequence of eighth notes. Measures 114-119 continue with eighth notes, including some beamed pairs. Measures 120-122 feature a change in rhythm with a quarter note followed by eighth notes. Measures 123-125 show a sequence of eighth notes with some beaming. Measures 126-128 continue with eighth notes. Measures 129-130 are a short phrase of quarter notes. Measures 131-133 show a sequence of eighth notes. Measures 134-135 feature a sequence of eighth notes with some beaming. Measures 136-137 continue with eighth notes. Measures 138-139 show a sequence of eighth notes with some beaming. Measures 140-141 continue with eighth notes. Measures 142-143 show a sequence of eighth notes. Measures 144-145 continue with eighth notes.



Musical score for guitar, measures 146-171. The score is written in treble clef with a key signature of one sharp (F#). The time signature is 4/4. The music consists of a series of chords and melodic lines. Measures 146-147 show a melodic line with eighth notes. Measures 148-149 show a chordal texture with dotted rhythms. Measures 150-151 show a melodic line with eighth notes. Measures 152-153 show a chordal texture with dotted rhythms. Measures 154-155 show a melodic line with eighth notes. Measures 156-157 show a melodic line with eighth notes. Measures 158-159 show a chordal texture with dotted rhythms. Measures 160-161 show a melodic line with eighth notes. Measures 162-163 show a chordal texture with dotted rhythms. Measures 164-165 show a melodic line with eighth notes. Measures 166-167 show a chordal texture with dotted rhythms. Measures 168-169 show a melodic line with eighth notes. Measures 170-171 show a chordal texture with dotted rhythms. The score includes various musical notations such as notes, rests, and bar lines.



Musical score for guitar, measures 172-195. The score is written in treble clef with a key signature of one sharp (F#). The music consists of a single melodic line. Measures 172-175 show a sequence of eighth notes with some double bar lines. Measures 176-177 continue the sequence. Measure 178 is a whole rest. Measure 179 is a whole note. Measures 180-181 are whole notes. Measures 182-183 are whole notes. Measures 184-185 are whole notes. Measures 186-187 are whole notes. Measures 188-191 show a sequence of eighth notes with some double bar lines. Measures 192-193 continue the sequence. Measures 194-195 show a sequence of eighth notes with some double bar lines.