

Call Of Ktulu

Metallica
Ride The Lightning
Baixo Elétrico / Bass

Standard tuning

$\text{♩} = 137$



1 2 3 4 5 6 7 8

9 10 11 12 13 14 15 16 17

18 19 20 21 22 23 24 25 26

27 28 29 30 31 32 33 34

35 36 37 38 39 40 41

42 43 44 45 46 47

48 49 50 51

52 53 54

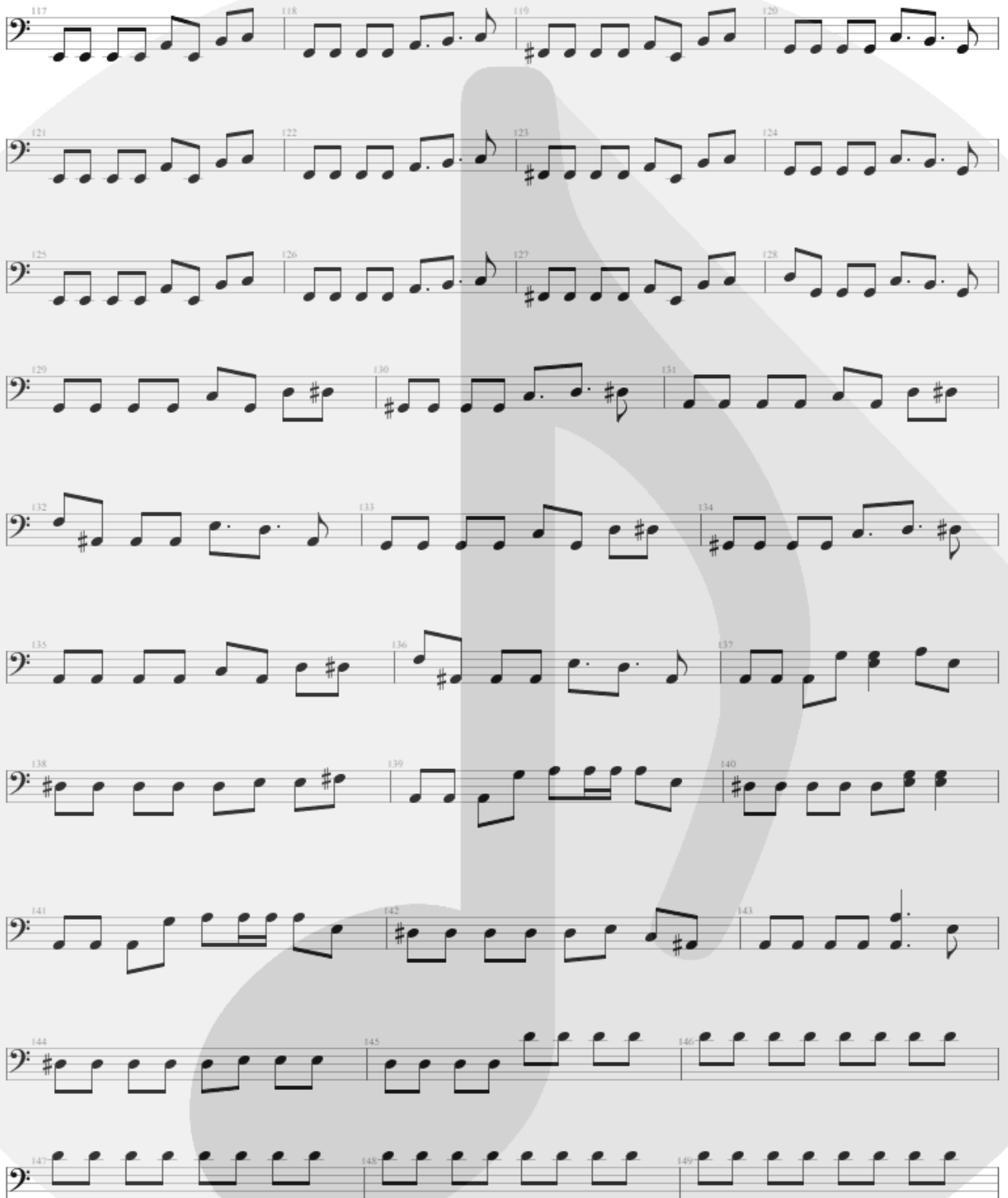
55 56 57



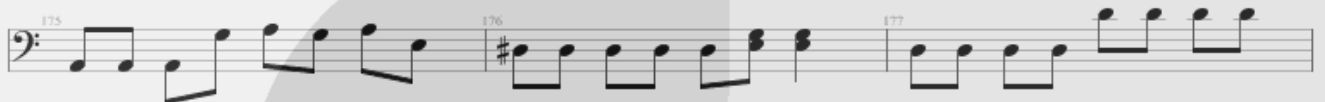
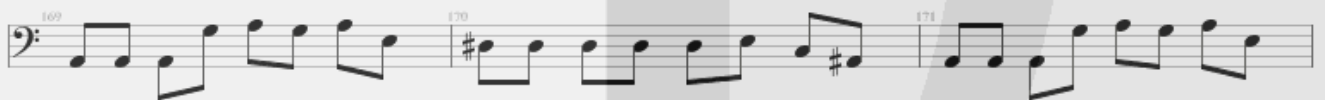
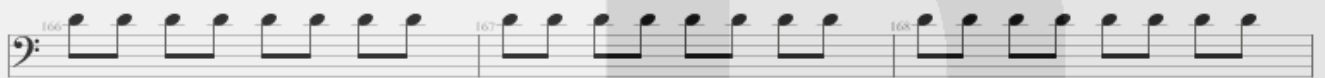
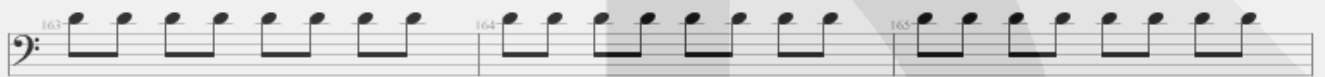
Musical score for bass clef, measures 58-85. The score consists of ten staves of music. The first staff (measures 58-59) features a dense sixteenth-note pattern. The second staff (measures 60-63) continues with rhythmic patterns and includes a key signature change to one sharp (F#). The third staff (measures 64-66) shows a mix of eighth and sixteenth notes. The fourth staff (measures 67-69) includes a whole rest in measure 68. The fifth staff (measures 70-72) continues the melodic line. The sixth staff (measures 73-75) features a prominent sixteenth-note run. The seventh staff (measures 76-79) includes a key signature change to two sharps (F# and C#). The eighth staff (measures 80-82) continues with rhythmic patterns. The ninth staff (measures 83-85) includes a whole rest in measure 84.

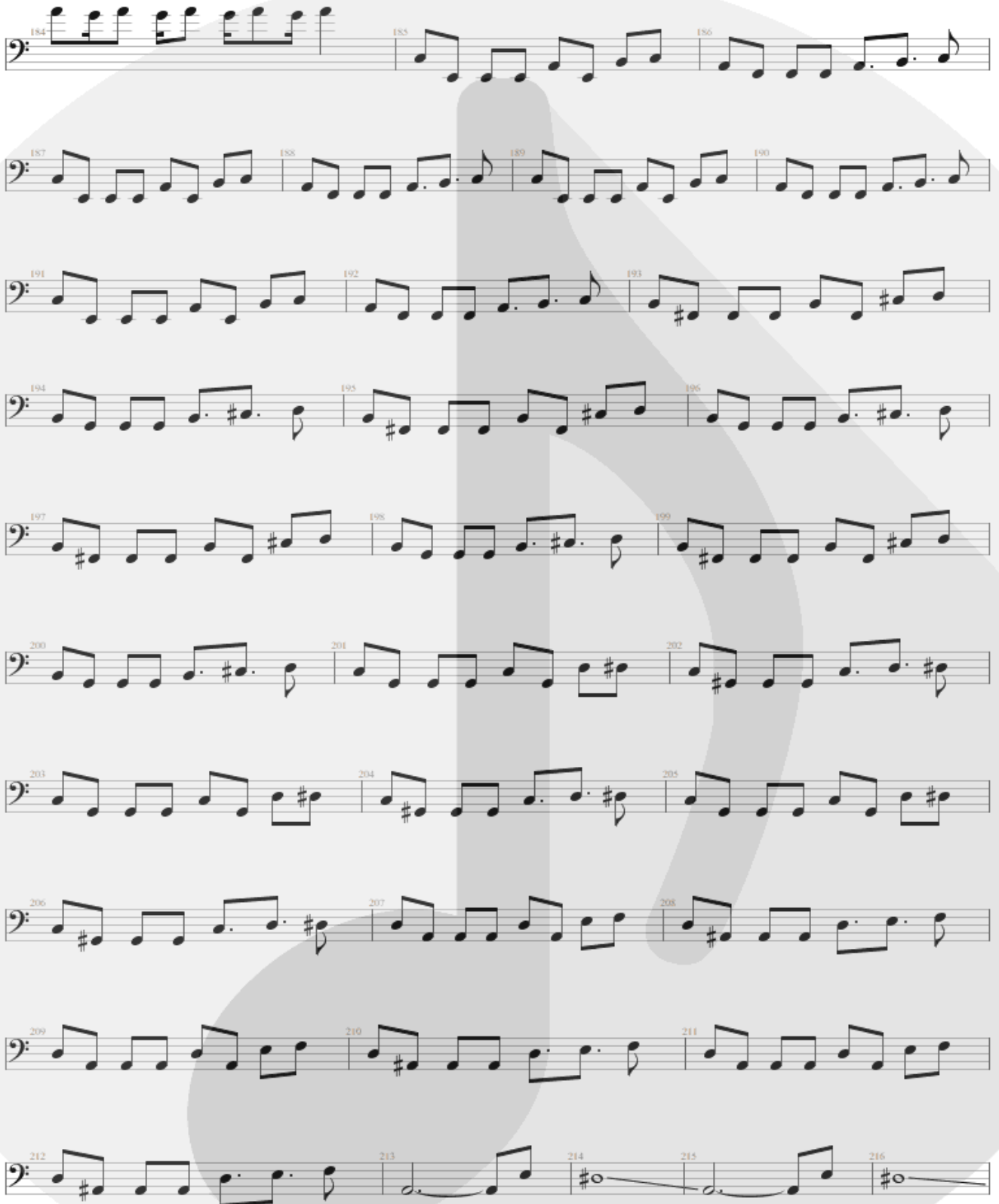


Musical score for bass clef, measures 86-116. The score consists of ten staves of music. The key signature is one sharp (F#). The music features a variety of rhythmic patterns, including eighth and sixteenth notes, and rests. Measure 90 contains a complex sixteenth-note pattern. Measure 100 features a whole note chord. Measure 112 contains a complex sixteenth-note pattern. The score ends with a double bar line at measure 116.



Musical score for bass clef, measures 117-149. The score consists of ten staves of music. Measures 117-120 show a sequence of eighth notes. Measures 121-124 continue with eighth notes, including a key signature change to one sharp (F#) at measure 123. Measures 125-128 show eighth notes with a key signature change to two sharps (F# and C#) at measure 127. Measures 129-131 show eighth notes with a key signature change to one sharp (F#) at measure 130. Measures 132-134 show eighth notes with a key signature change to two sharps (F# and C#) at measure 134. Measures 135-137 show eighth notes with a key signature change to one sharp (F#) at measure 136. Measures 138-140 show eighth notes with a key signature change to two sharps (F# and C#) at measure 139. Measures 141-143 show eighth notes with a key signature change to one sharp (F#) at measure 142. Measures 144-146 show eighth notes with a key signature change to two sharps (F# and C#) at measure 145. Measures 147-149 show eighth notes with a key signature change to one sharp (F#) at measure 148.





Musical score for bass clef, measures 184-216. The score consists of ten staves of music. The first staff (measures 184-186) features a complex rhythmic pattern with sixteenth notes and eighth notes. The subsequent staves (measures 187-216) show a more regular rhythmic pattern, primarily consisting of quarter and eighth notes. The key signature is one sharp (F#), and the time signature is 4/4. The score ends with a double bar line and a sharp sign (#) on the final measure (216).

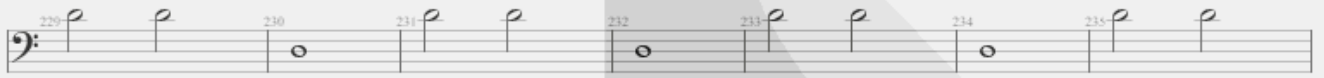
217 218 219 220 221 222



223 224 225 226 227 228



229 230 231 232 233 234 235

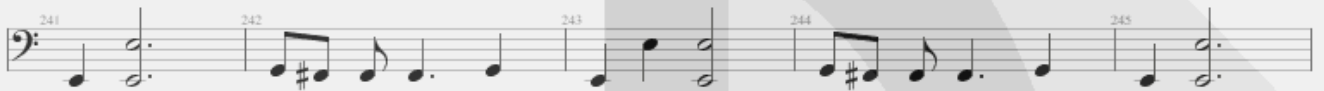


♩ = 45 ♩ = 137

236 237 238 239 240



241 242 243 244 245



246 247 248 249



250 251 252 253



254 255 256 257



258 259 260 261



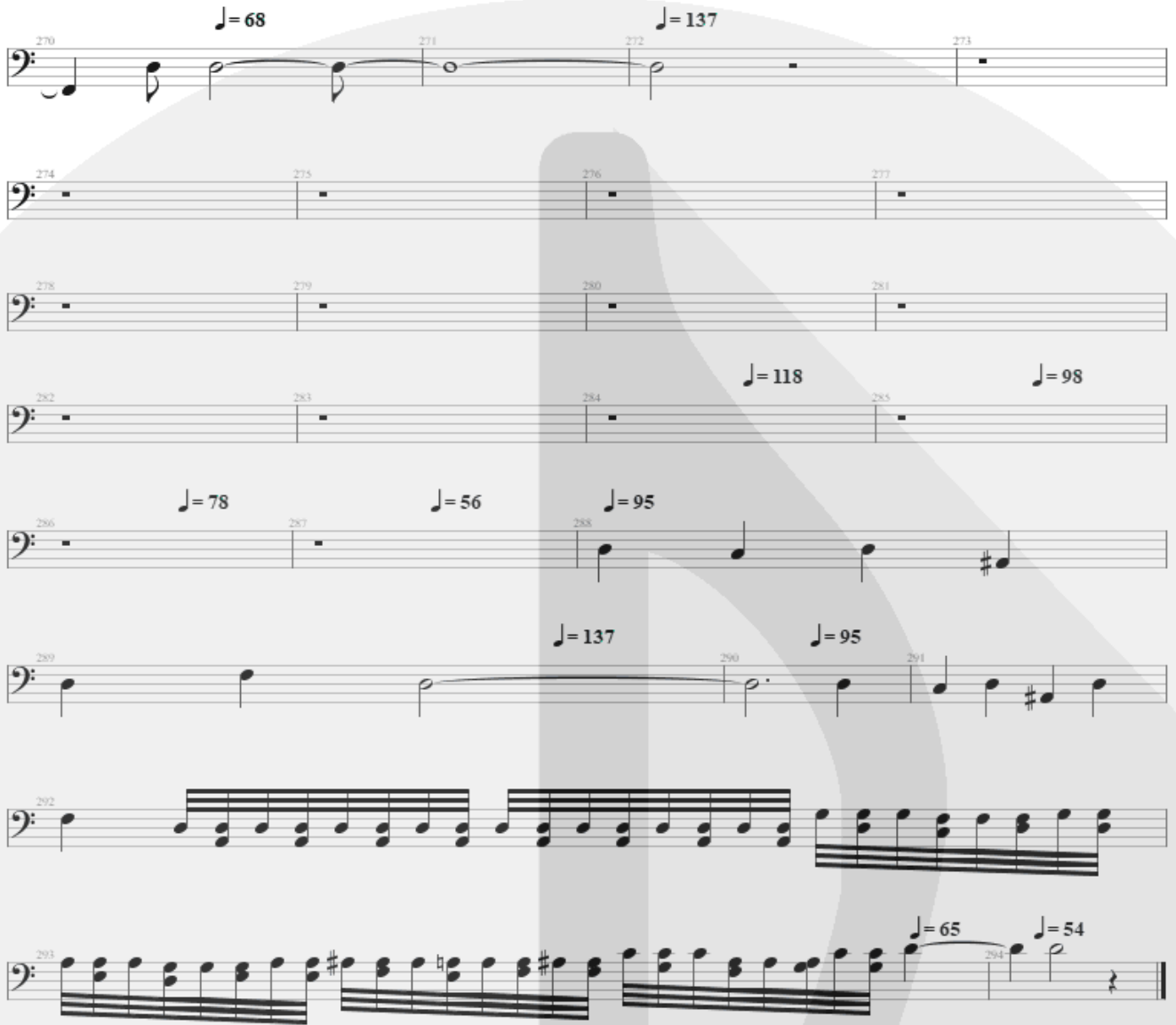
262 263 264 265



♩ = 98

266 267 268 269





270 $\text{♩} = 68$ 271 272 $\text{♩} = 137$ 273

274 275 276 277

278 279 280 281

282 283 284 $\text{♩} = 118$ 285 $\text{♩} = 98$

286 $\text{♩} = 78$ 287 $\text{♩} = 56$ 288 $\text{♩} = 95$

289 $\text{♩} = 137$ 290 $\text{♩} = 95$ 291

292

293 $\text{♩} = 65$ 294 $\text{♩} = 54$